

DATE OF SURVEY: 21-28 JANUARY 2022 1-2-9 FEBRUARY 2022	REG. NO./FILE NO.: 15138/D/N3/N4
SCALE: ONE INCH = 100 FEET	PR: CB
F. FIELD BOOKS: DMA 10 2021216	MP: 50/26

APPROVED: P. KEARNS SUPERVISOR	APPROVED: J. WRAZ DATE: 10 FEBRUARY 2022
APPROVED: M. EDGIE DATE: 10 FEBRUARY 2022	
APPROVED: P. BRIDGER DATE: 10 FEBRUARY 2022	

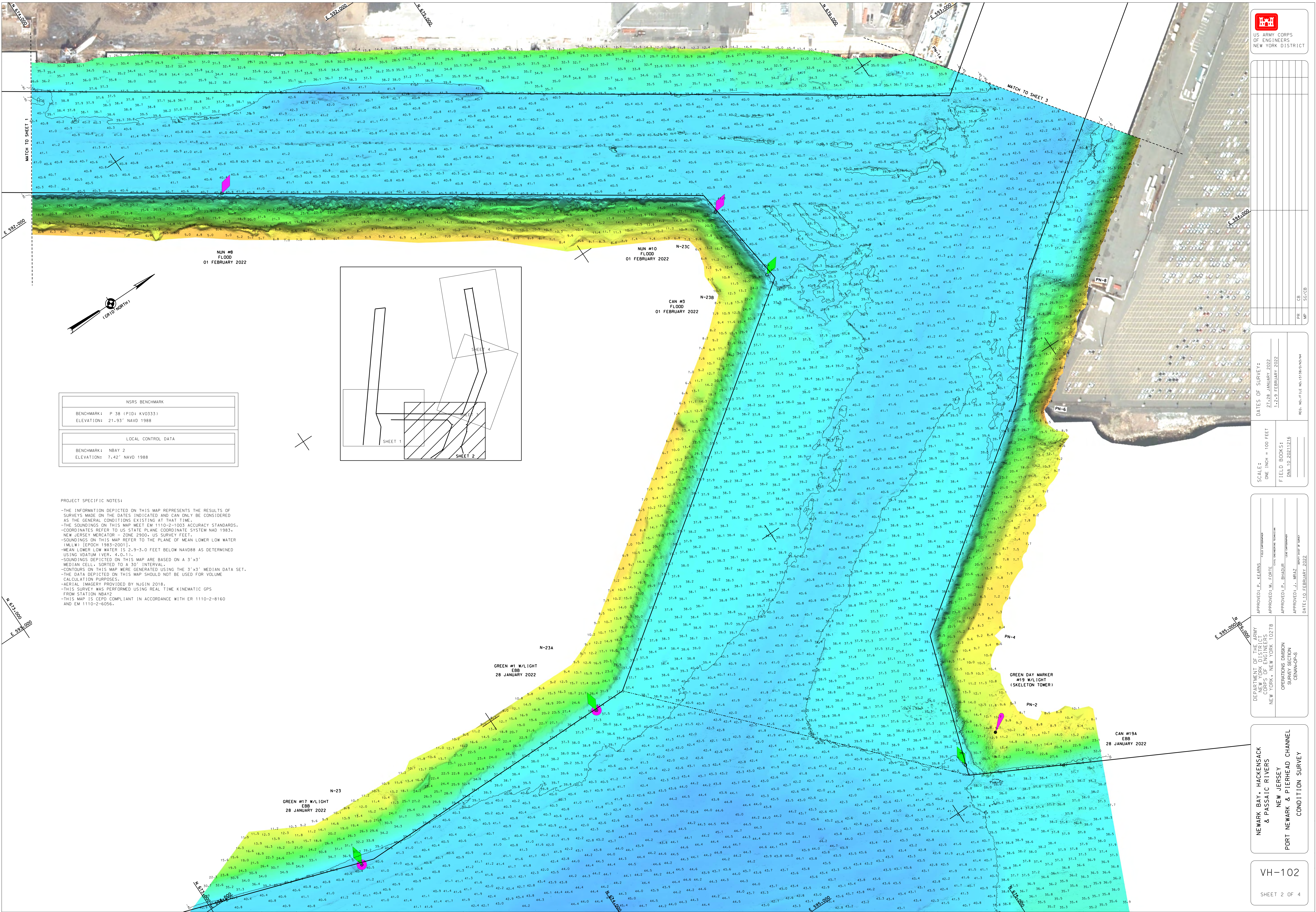
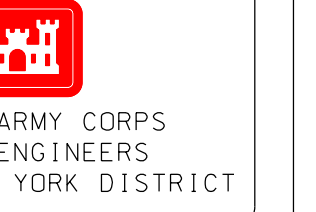
DEPARTMENT OF THE ARMY CORPS OF ENGINEERS NEW YORK, NEW YORK 10278	OPERATIONS DIVISION SOUNDINGS SECTION GENAW-OPS
--	---

NEWARK BAY, HACKENSACK & PASSAIC RIVERS
NEW JERSEY
PORT NEWARK & PIERHEAD CHANNEL
CONDITION SURVEY

VH-101
SHEET 1 OF 4

NSRS BENCHMARK	
BENCHMARK:	P 38 (PID: KVO333)
ELEVATION:	21.93' NAVD 1988
LOCAL CONTROL DATA	
BENCHMARK:	NBAY 2
ELEVATION:	7.42' NAVD 1988

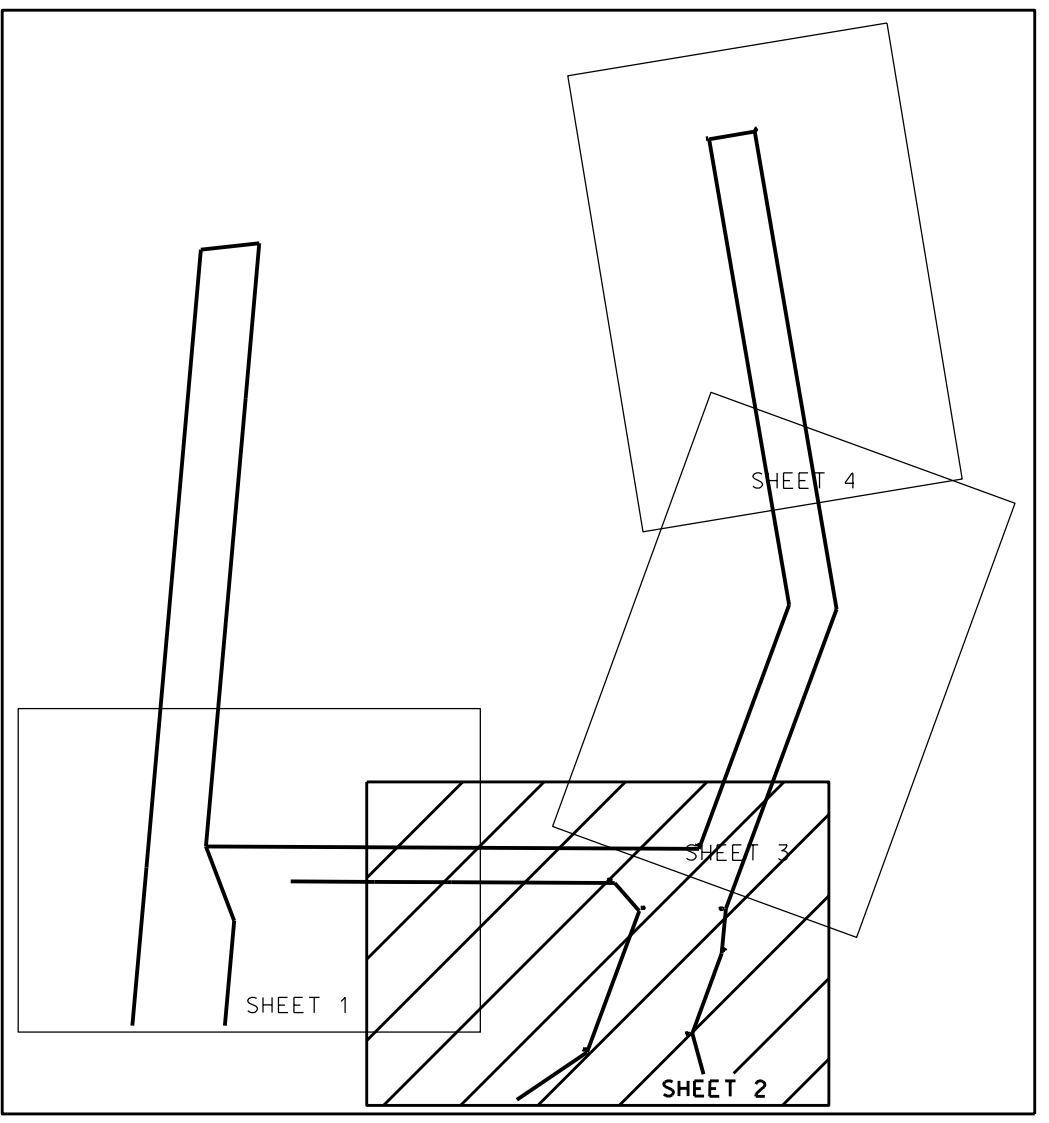
PROJECT SPECIFIC NOTES:
 -THE INFORMATION DEPICTED ON THIS MAP REPRESENTS THE RESULTS OF SURVEYS MADE ON THE DATES INDICATED AND CAN ONLY BE CONSIDERED AS THE GENERAL CONDITIONS EXISTING AT THAT TIME.
 -THE SOUNDINGS ON THIS MAP MEET EM 1110-2-1003 ACCURACY STANDARDS.
 -COORDINATES REFER TO US STATE PLANE COORDINATE SYSTEM NAD 1983, NEW JERSEY MERCATOR - ZONE 2000, US SURVEY FEET.
 -SOUNDINGS ON THIS MAP REFER TO THE PLANE OF MEAN LOWER LOW WATER (M.L.W.) (EPOCH 1983-2001).
 -MEAN LOWER LOW WATER IS 2.9-3.0 FEET BELOW NAVD88 AS DETERMINED USING VDATUM (VER. 4.0.1).
 -SOUNDINGS DEPICTED ON THIS MAP ARE BASED ON A 3'x3' MEDIAN CELL, SORTED TO A 30" INTERVAL.
 -CONTOURS ON THIS MAP WERE GENERATED USING THE 3'x3' MEDIAN DATA SET.
 -THE DATA DEPICTED ON THIS MAP SHOULD NOT BE USED FOR VOLUME CALCULATION PURPOSES.
 -AERIAL IMAGERY PROVIDED BY NJGIN 2018.
 -THIS SURVEY WAS PERFORMED USING REAL TIME KINEMATIC GPS FROM STATION NBAY2
 -THIS MAP IS CEPD COMPLIANT IN ACCORDANCE WITH ER 1110-2-B160 AND EM 1110-2-6056.



NSRS BENCHMARK	
BENCHMARK:	P 38 (PID: KVD333)
ELEVATION:	21.93' NAVD 1988
LOCAL CONTROL DATA	
BENCHMARK:	NBAY 2
ELEVATION:	7.42' NAVD 1988

PROJECT SPECIFIC NOTES:

- THE INFORMATION DEPICTED ON THIS MAP REPRESENTS THE RESULTS OF SURVEYS MADE ON THE DATES INDICATED AND CAN ONLY BE CONSIDERED AS THE GENERAL CONDITIONS EXISTING AT THAT TIME.
- THE SOUNDINGS ON THIS MAP MEET EM 1110-2-1003 ACCURACY STANDARDS.
- COORDINATES REFER TO US STATE PLANE COORDINATE SYSTEM NAD 1983, NEW JERSEY MERCATOR, ZONE 2500, US SURVEY FEET.
- SOUNDINGS ON THIS MAP REFER TO THE PLANE OF MEAN LOWER LOW WATER (MLLW) [EPOCH 1983-2001].
- MEAN LOWER LOW WATER IS 2.9-3.0 FEET BELOW NAVD88 AS DETERMINED USING VDATUM (VER. 4.0.1).
- SOUNDINGS DEPICTED ON THIS MAP ARE BASED ON A 3'x3' MEDIAN CELL, SORTED TO A 30" INTERVAL.
- CONTOURS ON THIS MAP WERE GENERATED USING THE 3'x3' MEDIAN DATA SET.
- THE DATA DEPICTED ON THIS MAP SHOULD NOT BE USED FOR VOLUME CALCULATION PURPOSES.
- AERIAL IMAGERY PROVIDED BY NGIN 2018.
- THIS SURVEY WAS PERFORMED USING REAL TIME KINEMATIC GPS FROM STATION NBAY2.
- THIS MAP IS CEPD COMPLIANT IN ACCORDANCE WITH ER 1110-2-8160 AND EM 1110-2-6056.

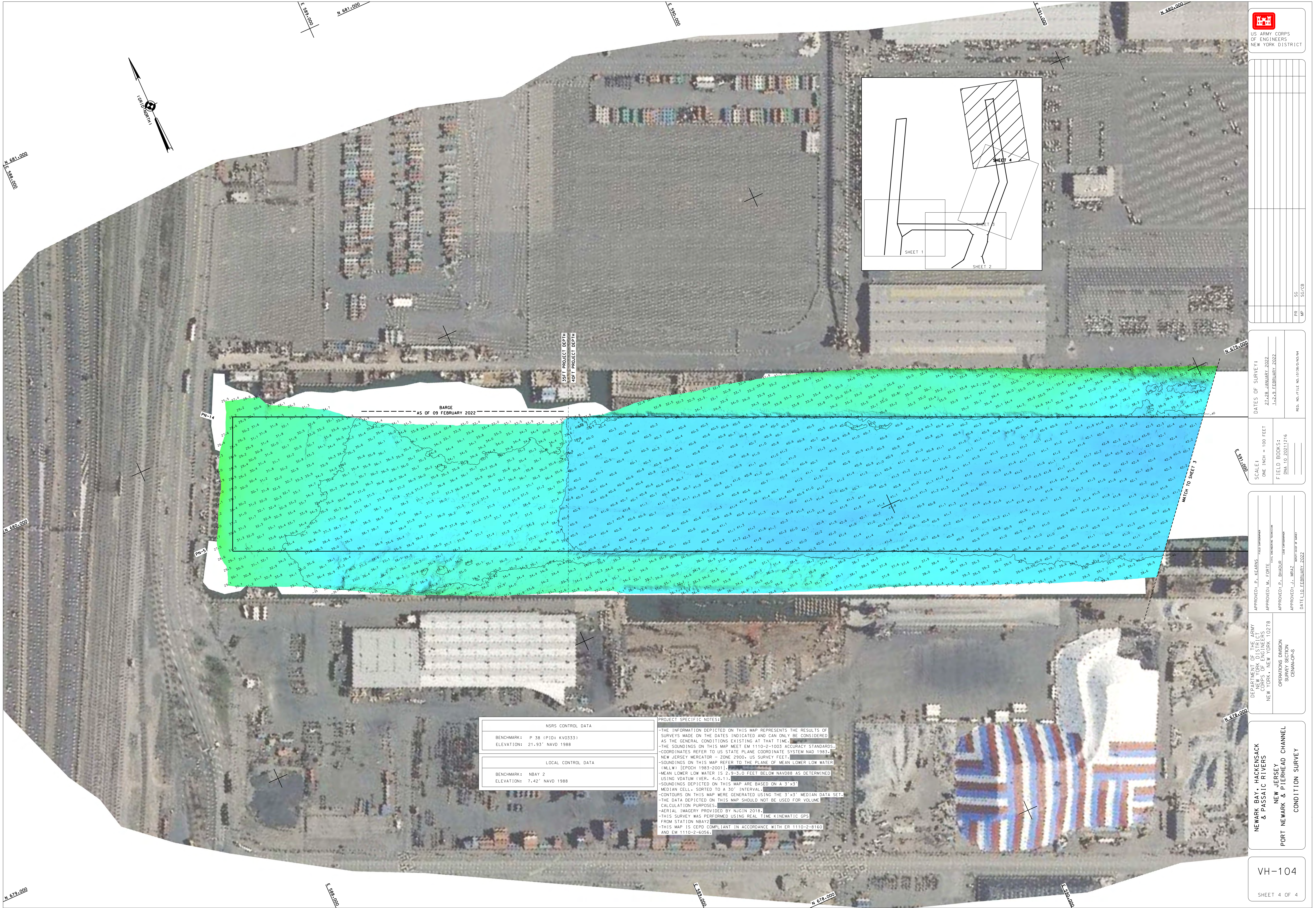
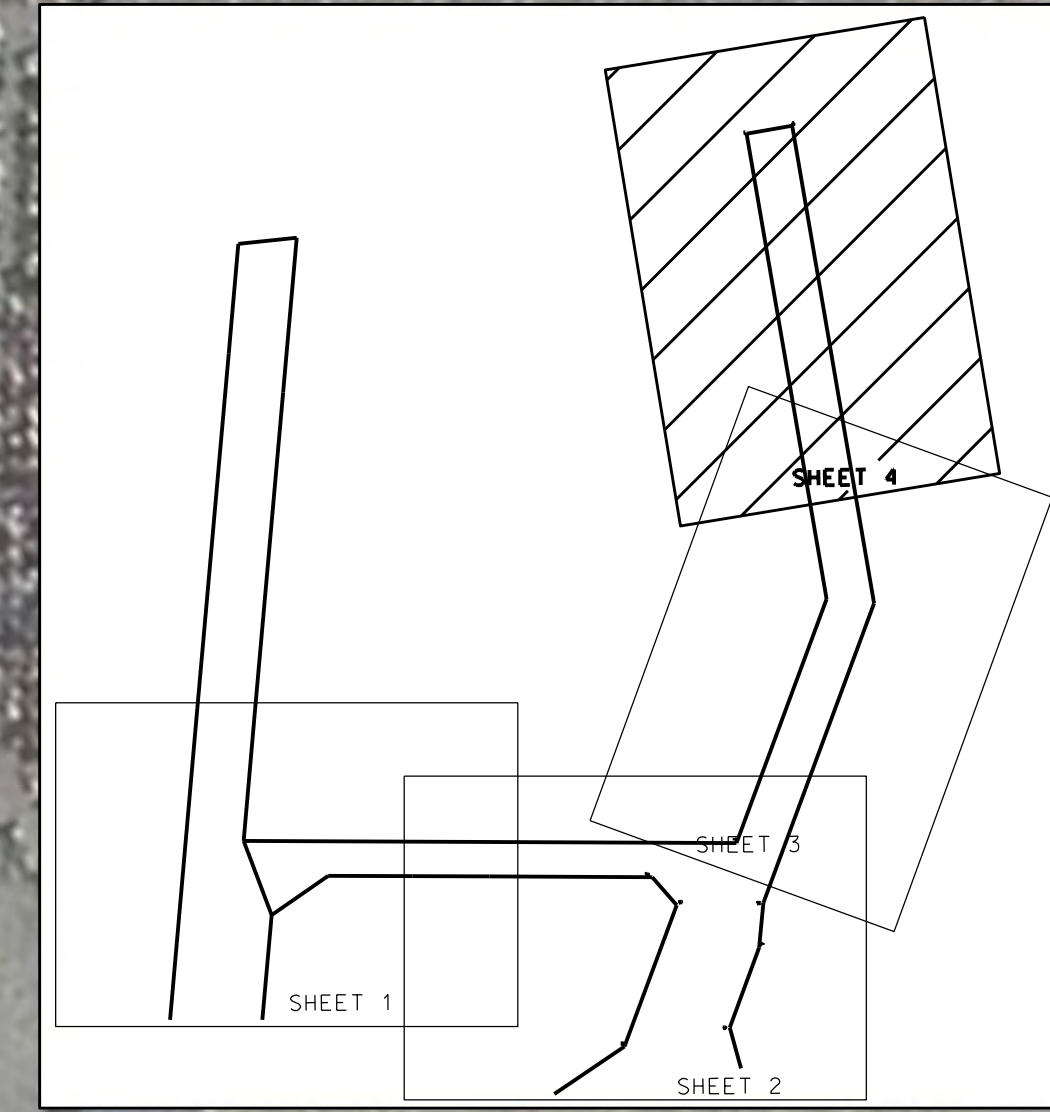
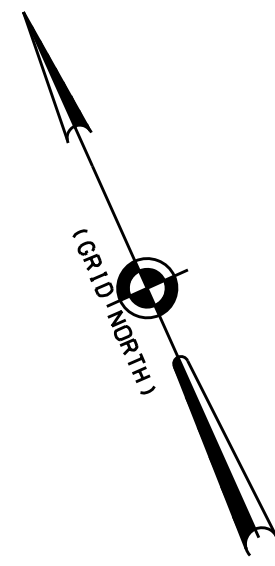
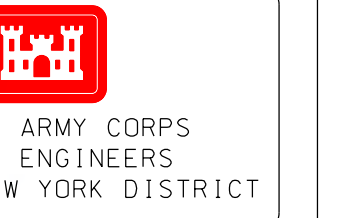


DATE OF SURVEY:	21-28 JANUARY 2022
FIELD BOOKS:	1-2-28 FEBRUARY 2022
SCALE:	ONE INCH = 100 FEET
FIELD BOOKS:	DATA 10, 20, 21, 22, 23, 24, 25, 26, 27, 28
REG. NO./FILE NO.:	15138/P/NS/P/4
PR:	CD
BP:	SC/GB

APPROVED BY:	REGULARS
APPROVED BY:	EDGTE
APPROVED BY:	BRIDGR
APPROVED BY:	WRZ
DATE:	18 FEBRUARY 2022

DEPARTMENT OF THE ARMY	OPERATIONS DIVISION
CORPS OF ENGINEERS	NEW JERSEY
NEW YORK	PORT NEWARK & PIERHEAD CHANNEL
NEW YORK 10278	CONDITION SURVEY

NEWARK BAY - HACKENSACK & PASSAIC RIVERS
NEW JERSEY
PORT NEWARK & PIERHEAD CHANNEL
CONDITION SURVEY



N 681.000
E 583.000

E 583.000
N 681.000

E 580.000

E 583.000

N 680.000

N 680.000

E 588.000

E 588.000

N 678.000

E 580.000

DATES OF SURVEY:
21.2.20 JANUARY 2022
1.22.20 FEBRUARY 2022

SCALE:
ONE INCH = 100 FEET
FIELD BOOKS:
DMA 10 20211216

APPROVED: P. JEBENS
APPROVED: M. EBBE
APPROVED: J. BRADY
DATE: 10 FEBRUARY 2022

DEPARTMENT OF THE ARMY
CORPS OF ENGINEERS
NEW YORK, NEW YORK 10278
OPERATIONS DIVISION
SOUTH PLANTATION
CENANN-OPS

NEWARK BAY, HARKENACK
& PASSAIC RIVERS
NEW JERSEY
PORT NEWARK & PIERHEAD CHANNEL
CONDITION SURVEY

VH-104

SHEET 4 OF 4

NSRS CONTROL DATA	
BENCHMARK:	P 38 (PID: K0333)
ELEVATION:	21.93' NAVD 1988
LOCAL CONTROL DATA	
BENCHMARK:	NBAY 2
ELEVATION:	7.42' NAVD 1988

PROJECT SPECIFIC NOTES:

- THE INFORMATION DEPICTED ON THIS MAP REPRESENTS THE RESULTS OF SURVEYS MADE ON THE DATES INDICATED AND CAN ONLY BE CONSIDERED AS THE GENERAL CONDITIONS EXISTING AT THAT TIME.
- THE SOUNDINGS ON THIS MAP MEET EM 1110-2-1003 ACCURACY STANDARDS.
- COORDINATES REFER TO US STATE PLANE COORDINATE SYSTEM NAD 1983 - NEW JERSEY MERCATOR - ZONE 2900, US SURVEY FEET.
- SOUNDINGS ON THIS MAP REFER TO THE PLANE OF MEAN LOWER LOW WATER (MLLW) [EPOCH 1985-2001].
- MEAN LOWER LOW WATER IS 2.9-3.0 FEET BELOW NAVD88 AS DETERMINED USING VDATUM (VER. 4.0-11).
- SOUNDINGS DEPICTED ON THIS MAP ARE BASED ON A 3'x3' MEDIAN CELL, SORTED TO A 30' INTERVAL.
- CONTOURS ON THIS MAP WERE GENERATED USING THE 3'x3' MEDIAN DATA SET.
- THE DATA DEPICTED ON THIS MAP SHOULD NOT BE USED FOR VOLUME CALCULATION PURPOSES.
- AERIAL IMAGERY PROVIDED BY NJGIS 2018.
- THIS SURVEY WAS PERFORMED USING REAL TIME KINEMATIC GPS FROM STATION N842.
- THIS MAP IS CEPD COMPLIANT IN ACCORDANCE WITH ER 1110-2-8160 AND EM 1110-2-6056.